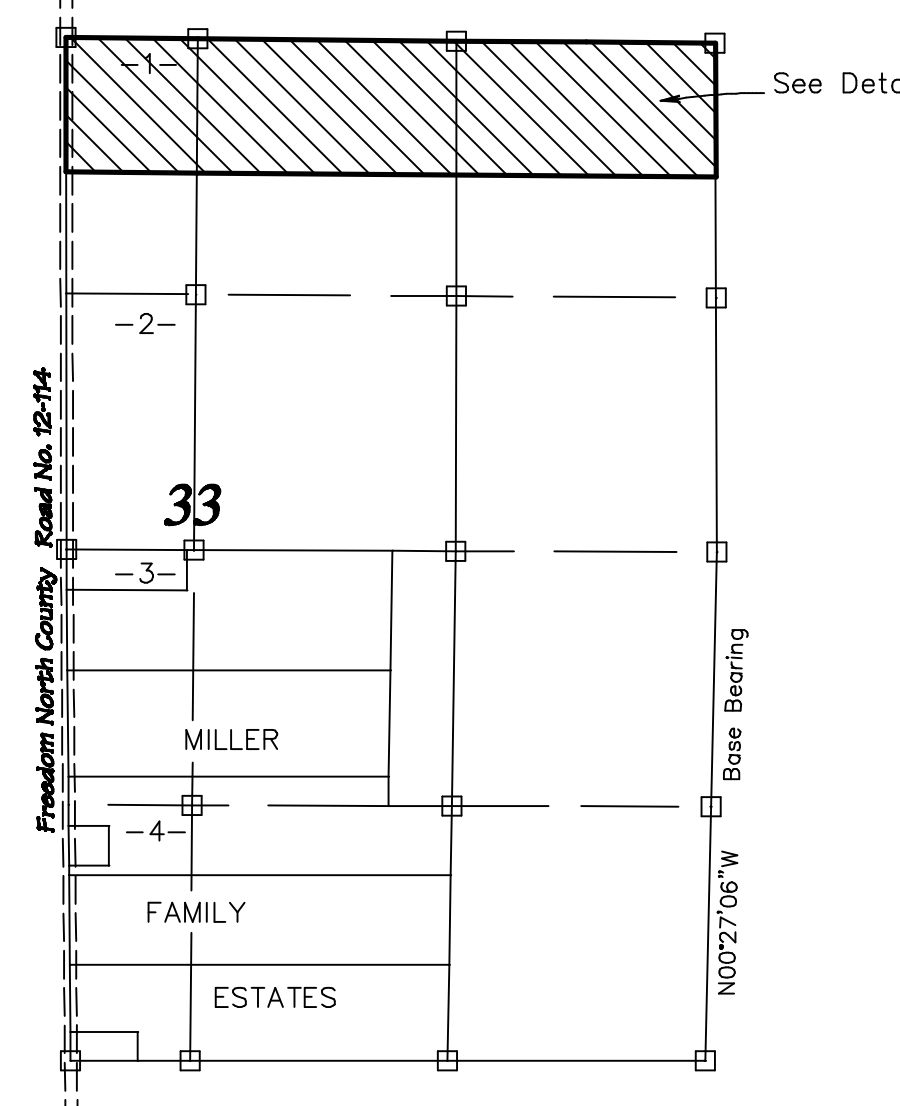


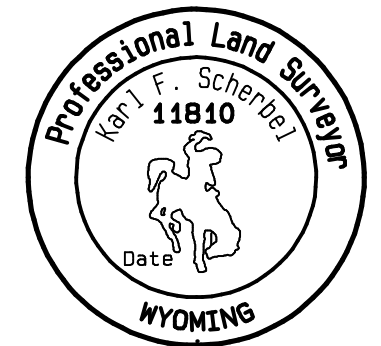
LOCATION MAP  
T36N R119W



SCALE: 1" = 1000'

CERTIFICATE OF SURVEYOR

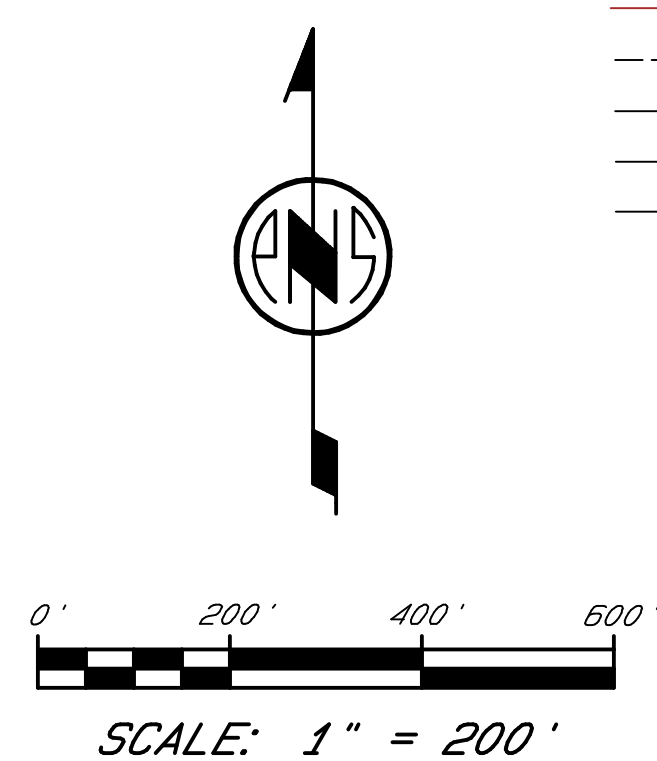
STATE OF WYOMING }  
COUNTY OF LINCOLN } ss...  
I, Karl F. Scherbel of Afton, Wyoming, hereby certify that this plat was made from notes taken during an actual survey made by me during October 2006 and from records in the Office of the Clerk of Lincoln County and that it correctly represents that survey and those records.  
The foregoing instrument was acknowledged before me by Karl F. Scherbel this \_\_\_ day of \_\_\_ 2009.  
Witness my hand and official seal.



Notary Public

LEGEND

- Indicates a Corner Record filed in the Office of the Clerk of Lincoln County, Wyoming or in the Office of the Recorder of Bonneville County, Idaho.
  - Indicates a 2" galvanized steel pipe with brass cap inscribed, "SCOTT A. SCHERBEL PLS 3889 BIG PINEY WYOMING", with appropriate details, found.
  - Indicates a 5/8" x 24" steel reinforcing rod with a 2" aluminum cap inscribed, "SURVEYOR SCHERBEL LTD AFTON WY PLS 5368", with appropriate details, set this survey.
  - Indicates a 7/8" steel reinforcing rod with 2" aluminum cap inscribed, "LLOYD B. BAKER & ASSOCIATES PE/LS 698 THAYNE WY", found.
  - Indicates an existing fence line.
  - Indicates an easement line.
  - Indicates a deed line of record.
  - Indicates a right-of-way line of State Line County Road No. 12-114.
  - Indicates approximate mean high water line of the Salt River as of 11 October 2006.
- The Base Bearing for this survey is the west line of the S1/2 of Section 33, T36N, R119W, being N00°27'06"W.

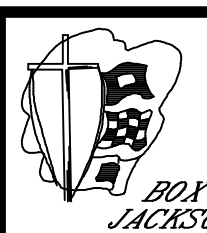


SCALE: 1" = 200'

ADVANCE PLAT  
SUBJECT TO CORRECTION  
AND APPROVAL

PLAT OF TRACT  
FOR  
TRP PARTNERS, L.P.  
WITHIN THE  
N1/2 SECTION 33  
T36N R119W  
LINCOLN COUNTY, WYOMING

DATE: 13 October 2006  
DRAWN BY: Karl F. Scherbel  
CALCULATED BY: Karl F. Scherbel  
CATTERED/PRINT: P.F.  
FIELD BOOK: AL-2  
COMPUTER FILE: WeimannS83.prs



SURVEYOR SCHERBEL, LTD.  
PROFESSIONAL LAND SURVEYORS  
BOX 4286 BIG PINEY-MARBLETON, WYO. 83113 TEL 307-276-3347  
BOX 725 AFTON, WYO. 83110 TEL 307-285-3319; BOX 3894 ALPINE, WYO. 83128 TEL 307-654-9319  
JACKSON, WYO. TEL 307-733-5930; LAYLA, ID TEL 208-776-5930; MONTPELIER, ID TEL 208-847-1854

§§

REVISIONS