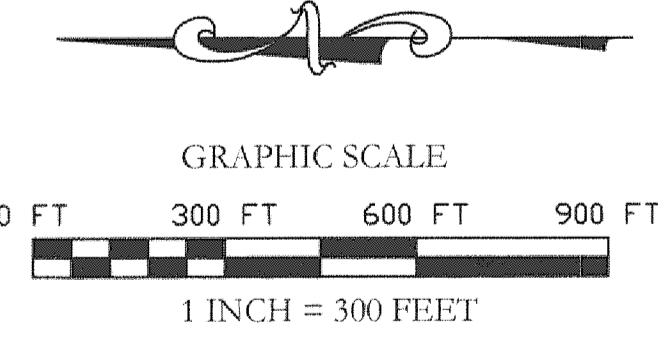


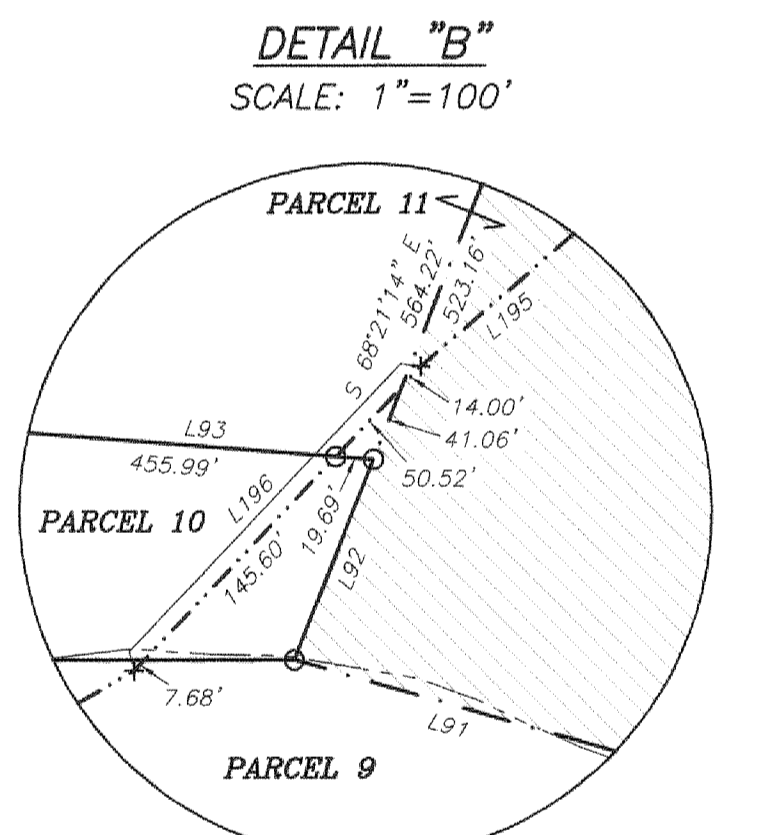
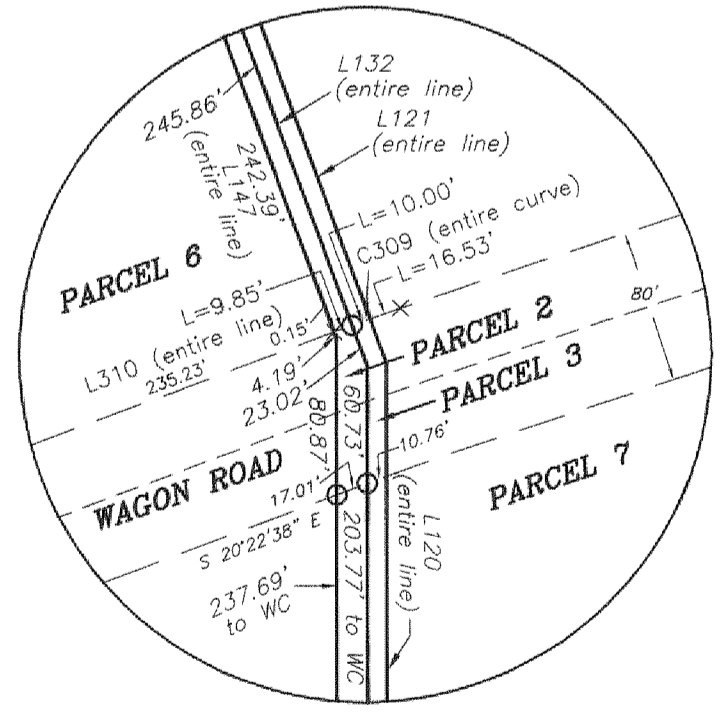
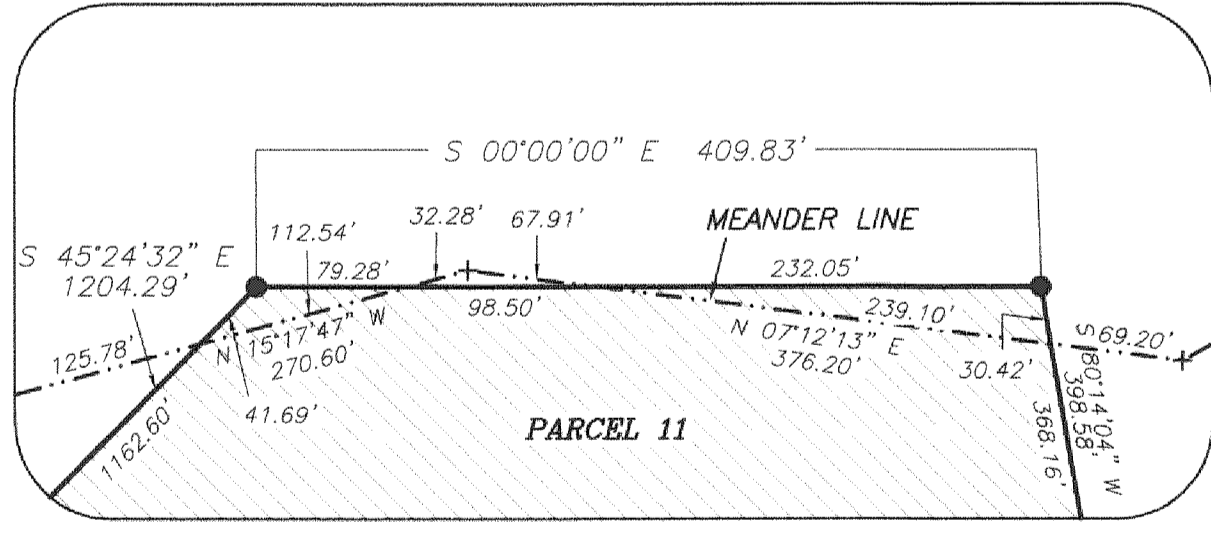
REFER TO SHEET 4 FOR LINE TABLE & CURVE TABLE



- LEGEND**
- INDICATES A 2" DIAMETER ALUMINUM PIPE WITH A 3-1/4" DIAMETER BLM-TYPE ALUMINUM CAP INSCRIBED WITH APPROPRIATE DETAILS FOUND THIS SURVEY; WYOMING CORNER RECORD ON FILE
  - INDICATES A 2" DIAMETER GALVANIZED PIPE WITH A 3-1/4" DIAMETER BRASS CAP INSCRIBED "PLS 6447" SET THIS SURVEY, WYOMING CORNER RECORD ON FILE
  - INDICATES A 5/8 INCH DIAMETER STEEL REBAR WITH AN ALUMINUM CAP INSCRIBED "PLS 6447" SET DURING PREVIOUS SURVEYS
  - × INDICATES A 5/8 INCH DIAMETER STEEL REBAR WITH AN ALUMINUM CAP INSCRIBED "PLS 6447" SET DURING PREVIOUS SURVEY TO MARK ACCESS & UTILITY EASEMENTS FOR WAGON ROAD AND ELK RIDGE ROAD
  - INDICATES A 5/8 INCH DIAMETER STEEL REBAR WITH AN ALUMINUM CAP INSCRIBED "PLS 6447" SET THIS SURVEY
  - + INDICATES A RECORD OR CALCULATED POINT
  - WC INDICATES A WITNESS CORNER

- LEGEND (CONT.)**
- SECTION LINE
  - QUARTER-SECTION LINE
  - SIXTEENTH-SECTION LINE OR GOVERNMENT LOT LINE
  - MEANDER LINE OF LEFT BANK OF SNAKE RIVER
  - EXTERIOR PROPERTY BOUNDARY
  - EXTERIOR PROPERTY BOUNDARY COINCIDENT WITH MAIN THREAD OF SNAKE RIVER
  - PARCEL BOUNDARY
  - ADJACENT PROPERTY BOUNDARY

- LEGEND (CONT.)**
- EASEMENT (PRE-2016) - CENTERLINE
  - EASEMENT (PRE-2016) - SIDELINES
  - EASEMENT (2016) - CENTERLINE
  - EASEMENT (2016) - SIDELINES
  - EDGE OF WATER (FROM 2015 TETON COUNTY GIS)
  - HIGHWAY
  - ▨ RIVER BEND RANCH NORTHERN DEVELOPMENT TRANSFER PARCEL - NO DEVELOPMENT RIGHTS ON THIS PARCEL



**On Sight**  
LAND SURVEYORS, INC.  
155 West Gill Ave.  
P.O. Box 12290  
Jackson, WY 83002  
(307) 734-6131

**F-458F**

MAP OF SURVEY  
PREPARED FOR  
SNAKE RIVER BEND RANCH, LLC  
SHOWING  
**RANCH ESTATES AT THE  
SNAKE RIVER SPORTING CLUB**  
LOCATED WITHIN  
SECTION 5 & SECTION 8  
T38N, R116W, 6TH P.M.  
TETON COUNTY, WYOMING