

CERTIFICATE OF OWNERS

KNOW ALL MEN BY THESE PRESENTS, that the GRAND TETON LODGE COMPANY, the undersigned owners and proprietors, have caused a tract of land to be platted and to be known as "JACKSON HOLE GOLF AND TENNIS CLUB ESTATES - SECOND FILING" situated in Lots 2, 3 & 4 and the NE 1/4 NW 1/4 Section 34, T. 42 N., R. 116 W., 6th P.M., Teton County, Wyoming and is more particularly bounded and described as follows, to-wit:

Commencing at the NW Corner of Section 34, T. 42 N., R. 116 W., 6th P.M., Teton County, Wyoming, a brass cap monument; thence S12°04'54"E a distance of 1834.64 feet to the Point of Beginning; thence N58°23'33"E a distance of 228.97 feet; thence N61°15'08"E a distance of 199.60 feet; thence N70°56'02"E a distance of 150.74 feet; thence N81°26'58"E a distance of 94.85 feet; thence N83°31'06"E a distance of 56.75 feet; thence N85°15'36"E a distance of 72.82 feet; thence N86°24'33"E a distance of 103.00 feet; thence N87°15'30"E a distance of 82.01 feet; thence N87°51'30"E a distance of 72.87 feet; thence N88°24'33"E a distance of 103.00 feet; thence N89°42'52"E a distance of 55.75 feet; thence S79°50'38"E a distance of 81.04 feet; thence N62°40'40"E a distance of 48.74 feet; thence N60°56'02"E a distance of 75.99 feet; thence S83°13'48"E a distance of 110.27 feet; thence S79°23'23"E a distance of 41.36 feet; thence N34°00'43"E a distance of 158.93 feet; thence N37°29'23"E a distance of 155.00 feet; thence S42°51'00"E a distance of 297.80 feet; thence N54°55'00"E a distance of 177.72 feet to a point on a curve to the right, having a radius of 1400.00 feet; thence on and along said curve a distance of 226.45 feet to the point of tangency; thence S26°38'00"E a distance of 192.40 feet; thence S2°28'04"E a distance of 14.65 feet; thence N3°22'00"E a distance of 60.00 feet; thence N2°28'04"E a distance of 12.65 feet; thence N26°38'00"W a distance of 194.40 feet to a point of tangency of a curve to the left, having a radius of 1400.00 feet; thence on and along said curve a distance of 226.45 feet; thence leaving said curve N49°47'00"E a distance of 334.65 feet; thence N2°28'04"E a distance of 14.65 feet; thence S37°07'43"E a distance of 303.91 feet; thence S27°55'36"W a distance of 158.37 feet to a point on a curve to the right, having a radius of 60.00 feet; thence on and along said curve a distance of 63.81 feet; thence leaving said curve S55°53'35"E a distance of 184.30 feet; thence S65°59'13"W a distance of 409.84 feet; thence S29°38'04"E a distance of 12.65 feet; thence S87°22'00"W a distance of 60.00 feet; thence N26°38'04"W a distance of 14.65 feet; thence S61°14'12"W a distance of 154.24 feet; thence S65°48'30"W a distance of 191.90 feet; thence S62°53'35"W a distance of 199.08 feet; thence S65°05'18"W a distance of 199.61 feet; thence S65°38'39"W a distance of 197.18 feet; thence S53°30'41"W a distance of 155.64 feet; thence N36°37'25"W a distance of 115.94 feet; thence S79°23'45"W a distance of 579.59 feet; thence N74°50'45"W a distance of 248.85 feet; thence N50°26'25"W a distance of 149.16 feet; thence N30°39'02"W a distance of 156.92 feet to the Point of Beginning.

Said tract of land contains 28.03 gross acres, the net platted area being 25.05 acres and that the survey and staking into lots, block and streets as appears on this plat, is with the free consent and in accordance with the desires of the undersigned owners and proprietors. That the foregoing is a correct plat of said subdivision as surveyed and stated into lots and block and streets and that the dimensions of lots and block and widths of streets are correctly shown on said plat by figures representing feet and decimals of a foot and that the GRAND TETON LODGE COMPANY hereby dedicates to the perpetual use of the public the streets within the boundaries of said subdivision as shown on the foregoing plat. This dedication is made subject to any existing easements and right of ways or mining and mineral reservations of record.

Witness our hand this 14th day of April 1973.

*James R. Spring* President  
*John V. Duncan* Secretary  
 Attest: *John V. Duncan* Secretary

CORPORATE ACKNOWLEDGEMENT  
 STATE OF Wyoming )  
 County of Teton ) ss # 130730  
 I, *James R. Spring*, Notary Public, do hereby certify that before me this 14th day of April 1973, the foregoing instrument was acknowledged before me this 14th day of April 1973, by *James R. Spring* and *John V. Duncan*, the undersigned owners and proprietors of the above described premises.

CERTIFICATION  
 I, James R. Spring, a Registered Land Surveyor as prescribed by the laws of the State of Wyoming, do hereby certify that by authority of the GRAND TETON LODGE COMPANY I have subdivided the land shown on this plat into lots and streets to be known as JACKSON HOLE GOLF AND TENNIS CLUB ESTATES - SECOND FILING. That the dimensions of the plat and lots contained are correctly shown to a scale of 1" = 100'; and that all lots are well and accurately staked.

*James R. Spring*  
 Notary Public  
 Registration No. 381

The foregoing instrument was acknowledged before me this 26th day of March 1973.  
 Witness my hand and official seal.  
 March 20, 1974  
 My Commission Expires

CERTIFICATE OF APPROVAL

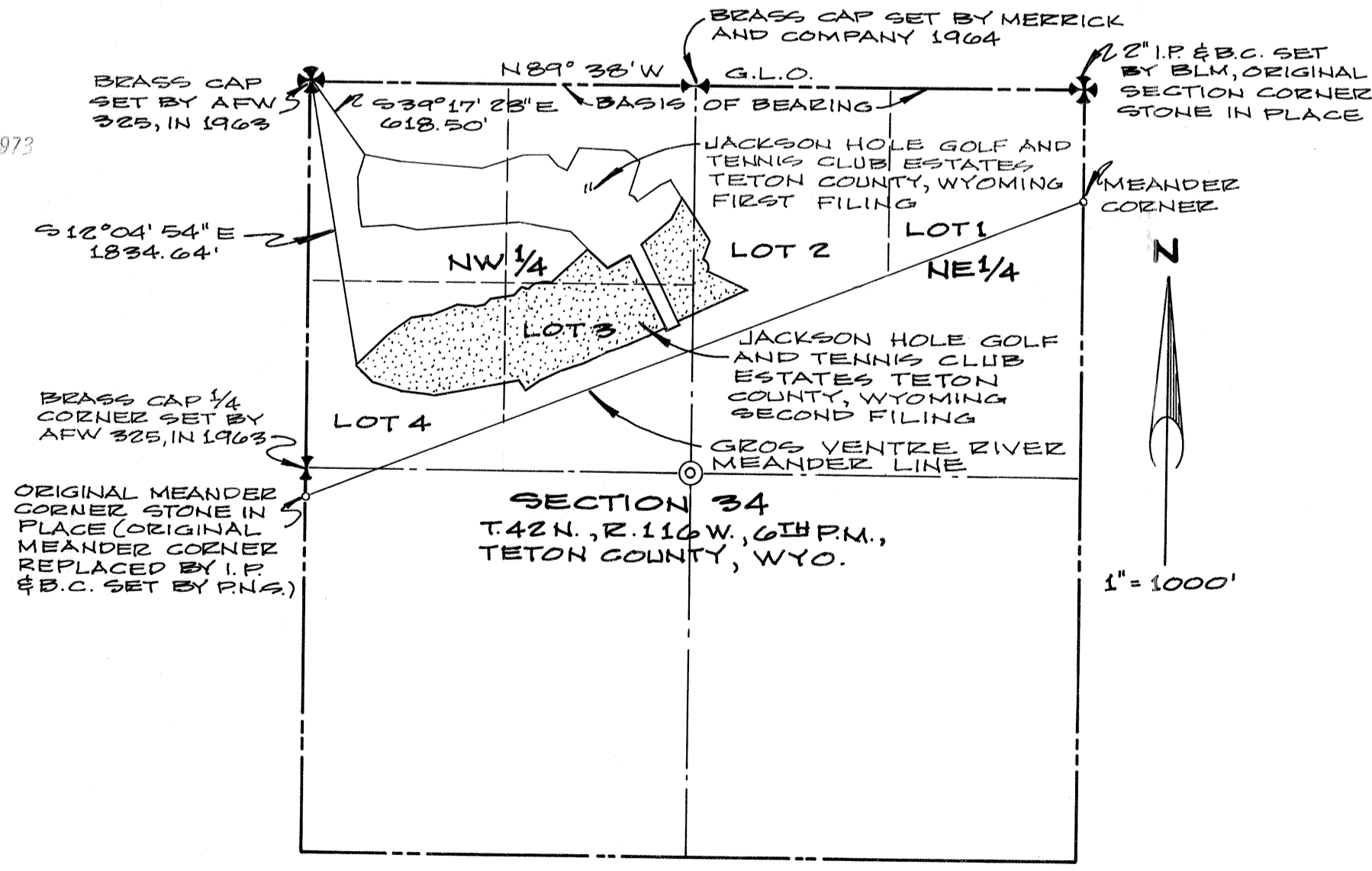
Approved by the Board of County Commissioners of Teton County, Wyoming in accordance with Sec. 34-114 Wyoming statutes 1957 as amended, and subject to the provisions of a resolution for the approval of subdivision and townsite plats as adopted on August 1, 1967, and Subdivision Resolution adopted January 1, 1973.

Chairman: *John V. Duncan*  
 Attest: *John V. Duncan* County Clerk  
 Date: 5-2-73

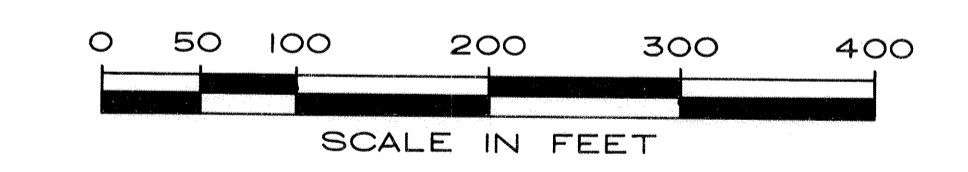
STATE OF WYOMING )  
 County of Teton ) ss # 130730  
 Filed for record in my office this 2nd day of May 1973 at 10:24 AM. Plat No. 230 in Book 1 maps Page 4  
*John V. Duncan*  
 Teton County Clerk and Ex-Officio Register of Deeds

LEGEND

- PROPERTY LINE
- FIRE HYDRANT
- o SET PLASTIC CAP ON 1/2" x 18" REBAR MARKED C.S.S.&A.



LOCATION MAP



# JACKSON HOLE GOLF AND TENNIS CLUB ESTATES

## SECOND FILING

SITUATED IN LOTS 2, 3, 8 4, AND THE NE 1/4 NW 1/4 SECTION 34, T. 42 N., R. 116 W., 6TH P.M., TETON COUNTY, WYOMING

FOR:  
 GRAND TETON LODGE COMPANY  
 GRAND TETON NATIONAL PARK,  
 WYOMING

PREPARED BY:  
 CHRISTIAN, SPRING, SIELBACH & ASSOCIATES  
 BILLINGS, MONTANA  
 MARCH 23, 1973